



Heizohack[®]

Professional Woodchippers
for hand- and crane feeding



GERMAN QUALITY SINCE 1982



Factory I - Maicha



Factory II - Heidenheim

Energy in Balance with Nature

In 1982 Robert Bloos created the first discharging system for woodchips. The idea behind it was to burn wood from his own forest with the same comfort as with fossil fuels.

We now produce products encompassing all things around woodchips at two locations in Bavaria, Germany. The core business is woodchip boilers, which we have been able to install more than 35.000 units in more than 30 countries. Chipping machines, filling equipment for woodchip storages, woodchip transportation systems, grippers and innovative solar trackers round off our product range.

We are convinced that heating with woodchips continues to be the best alternative for fossil energy sources. Thanks to sustainable forestry, the planting of fast-growing trees on plantations, along streams and on the sides of fields and roads, we will be able to continue to generate affordable and CO₂ neutral energy in balance with nature.



Heizohack HM 4 since 1989



Overview

Production in Bavaria

- Factory 1 - Maicha
 - HEIZOMAT show room
 - management
 - sales
 - construction
 - operation scheduling
 - development
 - software programming
 - logistics
 - service
 - trainee workshop
 - electric cabinet building
 - chipper final assembly
 - paintshop
 - special construction
 - turning plant
 - shipping
 - laser and folding
 - laundry
 - chipper repair center
- Factory 2 - Heidenheim
 - chipper construction
 - boiler construction
 - sawmill
 - pipe laser
 - construction of small parts
- 300 employees in Bavaria
- 500 employees worldwide

HM 4 / 6 - 300



Specifications

Infeed height:	300 mm
Transport height:	up to 2.450 mm
Transport width:	up to 2.100 mm
Ejection height:	
- 3-point-linkage:	up to 3.250 mm
- on chassis:	up to 3.390 mm
Working height:	up to 800 mm
Working width:	up to 3.050 mm
Conveyor belt:	600 mm
Infeed table length:	900 mm
Standard-sieve:	35/40 mm
Pressure roller Ø:	380 mm
Chipping drum Ø:	450 mm
Flywheel Ø:	1.120 mm
Flywheel mass:	130 kg
Drive speed:	max. 750 U/min
Max. Performance:	
- at 540 rpm	60 kW / 82 HP
- at 750 rpm	90 kW / 122 HP

HM 4 - 300

Infeed width:	330 mm
Length:	3.213 mm
Support load with chassis:	490 kg
Weight:	
- 3-point-linkage:	1.520 kg
- on chassis:	1.850 kg

HM 6 - 300

Infeed width:	500 mm
Length:	3.383 mm
Support load with chassis:	620 kg
Weight:	
- 3-point-linkage:	1.740 kg
- on chassis:	2.250 kg

Chassis

- Chassis 25 km/h no braking device
- Chassis 25 km/h with cable handbrake
- Tyres 10/75-15.3
- Height of towing port: 800 mm to 900 mm adjustable or Hitch - height of towing port with 500 mm



HIGHLIGHTS



Infeed switch off due to safety rope from steel



3-point-linkage extension with free wheel



Speed of infeed adjustable by flow divider



Exchange blades



Discharge chute adjustment manually

HM 6 - 300 VM



Specifications

Infeed height:	300 mm
Infeed width:	500 mm
Transport height:	2.782 mm
Transport width:	2.110 mm
Ejection height:	up to 4.000 mm
Working height:	1.010 mm
Conveyor belt:	600 mm
Infeed table length:	900 mm
Standard-sieve:	35/40 mm
Pressure roller Ø:	380 mm
Chipping drum Ø:	450 mm
Flywheel Ø:	1.120 mm
Length:	4.520 mm
Flywheel mass:	130 kg
Support load:	100 kg
Weight:	3.500 kg

HM 6 - 300 VM - CAT:

Diesel engine:	Caterpillar C2.8B
Number of cylinders:	4 cylinder
Exhaust standard:	Tier 4 final
Engine displacement:	2.799 ccm
Performance:	55 kW / 75 PS
Cooling:	water-cooled

HM 6 - 300 VM - HATZ:

Diesel engine:	HATZ 4H50TiCD
Number of cylinders:	4 Zylinder
Exhaust standard:	Tier 4 final
Engine displacement:	1.952 ccm
Performance:	55 kW / 75 PS
Cooling:	water-cooled

Chassis

- ALKO - chassis tandem with 80 km/h approval
- Overrun brakes or air brake system
- Height of towing port from 500 mm to 910 mm
- Tyres 225/70 R14



HIGHLIGHTS



Standard reversible fan



Massive turnable assembly
270° rotatable



80 km/h chassis from ALKO



Underrun guard



Height-adjustable drawbar
with coupling ring or trailer ball

Hatz Engine



CAT Engine



HM 8 - 400



Specifications

Infeed height:	400 mm
Infeed width:	670 mm
Transport height:	2.588 mm
Transport width:	2.265 mm
Ejection height:	up to 4.100 mm
Working height:	800 mm
Working width:	3.180 mm
Conveyor belt:	600 mm
Infeed Table length:	900 mm
Standard-sieve:	35/40 mm
Pressure roller Ø:	450 mm
Chipping drum Ø:	495 mm
Flywheel Ø:	1.370 mm
Length:	3.650 mm
Flywheel mass:	470 kg
Support load:	1.200 kg
Weight:	3.800 kg
Drive speed:	max. 750 rpmn
max. Performance:	
at 540 rpm	100 kW / 136 HP
at 750 rpm	139 kW / 190 HP

Chassis

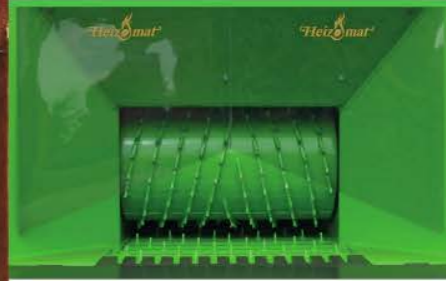
- Chassis 25 km/h with cable handbrake
- Chassis 40 km/h with spring loaded pneumatic break
- Height of towing port: 850 - 950 mm adjustable or Hitch - height of towing port with 500 mm
- Tyres:
 - » 400 / 60 - 15.5
 - » 480 / 45 - 17



HIGHLIGHTS



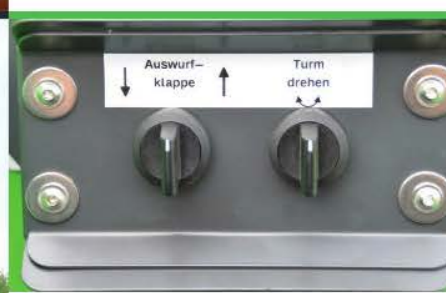
Hitch - height of towing port 500 mm



Top pressure roller Ø 450 mm with conveyor belt



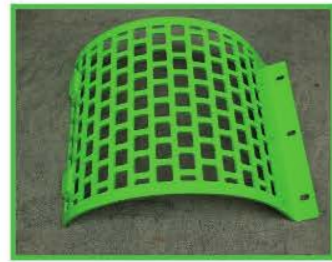
Own oil supply



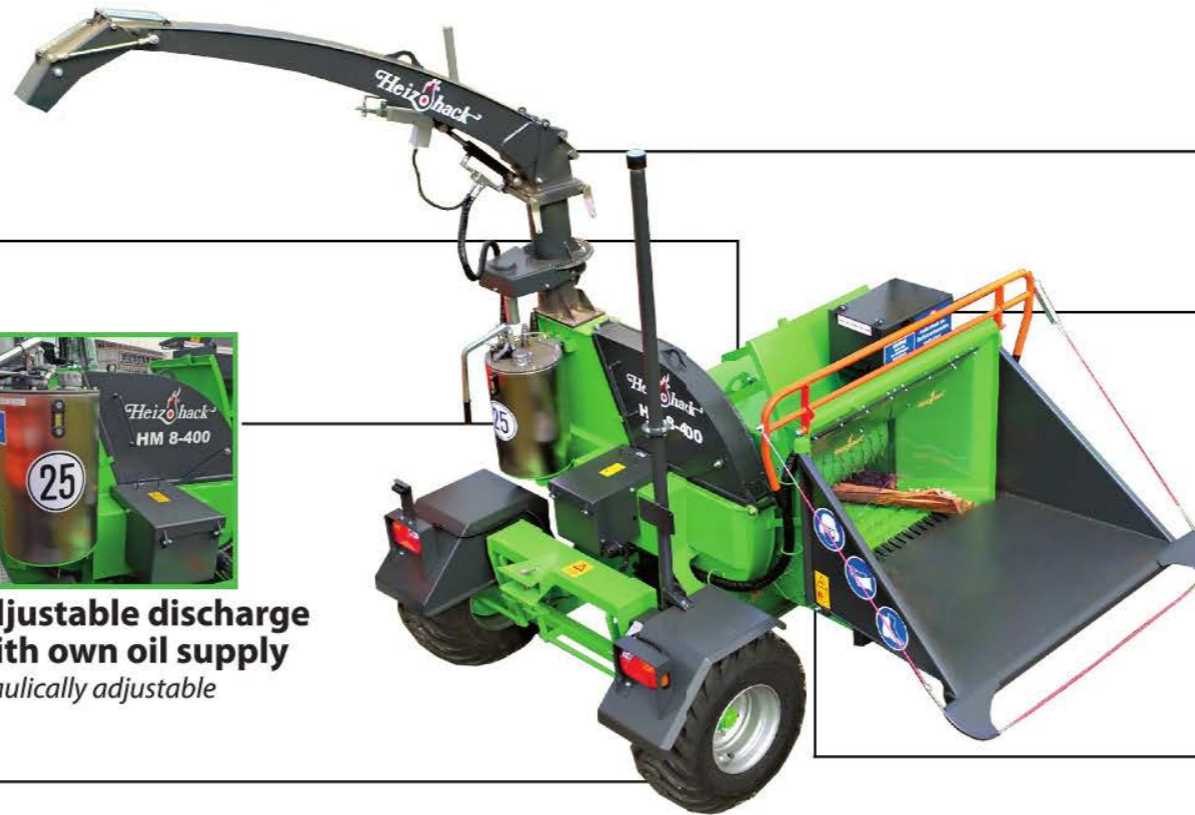
Discharge chute and flap electrical



Integrated toolbox incl. tools



Sieve
different sieves for individual wood chips



Height adjustable discharge chute with own oil supply
hydraulically adjustable



Speed-regulated Infeed
anti-stress-control



Discharge chute rotatable
drive via electric motor



3-point linkage or chassis
individual transport options



Central lubrication points
easy and fast lubrication



Wear plate armoured
for maximum tool life



Camera and LED headlights
placed at the discharge chute for best view



Automatic central lubrication
easy and fast lubrication



Hydraulic block
incl. lever for manual operation



Multipiece counterknife with hardmetal plates

- maximum life time
- easier maintenance work
- better chipping quality



Conveyor belt at the Infeed table
aggressive and powerful material infeed, can be used as a funnel



Cone splitter
for pre-splitting of logs



Radio remote control
various hydraulic functions adjustable

HM 8 - 400 KF/KFL



Specifications

Infeed height:	400 mm
Infeed width:	708 mm
Conveyor belt:	900 mm
Standard-sieve:	35/40 mm
Chipping drum Ø:	495 mm
Pressure roller Ø:	520 mm
Flywheel Ø:	1.370 mm
Infeed table length:	1.500 mm
Flywheel mass:	470 kg

HM 8 - 400 KF^(*) (without crane)

Ejection height:	up to 4.270 mm
Transport height:	3.250 mm
Transport width:	up to 2.750 mm
Working height:	1.140 mm
Length:	4.450 mm
Support load:	1.550 kg
Weight:	6.000 kg

HM 8 - 400 KFL^(*) (with crane)

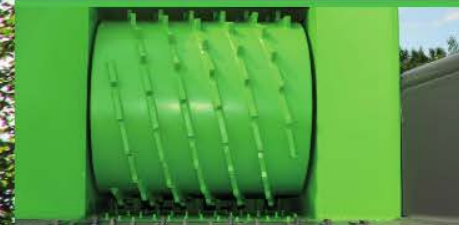
Ejection height:	up to 4.600 mm
Transport height:	3.200 mm
Transport width:	up to 2.850 mm
Working height:	1.470 mm
Length:	4.850 mm
Support load:	1.200 kg
Weight:	8.400 kg

Chassis

- 40 km/h trailing axle chassis ^(*)
- 40 km/h single axle chassis for crane installation ^(*)
- Spring-loaded pneumatic brake
- Tyres:
 - » 385/55 R22.5 ^(*) » 400/55 22.5 ^(*)
 - » 560/45 R22.5 ^(*) » 500/45 22.5 ^(*)
- Height of towing port:
 - » 500 mm ^(*) » 520 mm ^(*)
 - » 620 mm ^(*) » 900 mm ^(*)
 - » 1.000 mm ^(*)



HIGHLIGHTS



Top pressure roller
Ø 520 mm



Conveyor belt at the infeed table



Hydraulic control block



Height adjustable
500, 600, 900 and 1000 mm



Massive V-belt transmission

all informations with chassis

HM 8 - 500 KF / KFL HM 10 - 500 KF HM 14 - 800 KF



Specifications

Infeed height:	800 mm
Conveyor belt:	900 mm
Infeed table length:	1.500 mm
Standard-sieve:	45/60 mm
Chipping drum Ø:	495 mm
Pressure roller Ø:	800 mm
Flywheel Ø:	1.370 mm
Flywheel mass:	1.000 kg

HM 8 - 500 KF^(*)

Infeed width:	708 mm
Ejection height:	up to 4.250 mm
Transport height:	2.900 mm
Transport width:	up to 2.750 mm
Working height:	1.150 mm
Length:	4.650 mm
Support load:	2.300 kg
Weight:	7.980 kg

HM 8 - 500 KFL^(**) (with crane)

Infeed width:	708 mm
Ejection height:	up to 4.580 mm
Transport height:	3.230 mm
Transport width:	up to 2.850 mm
Working height:	1.420 mm
Length:	5.050 mm
Support load:	1.060 kg
Weight:	10.100 kg

HM 10 - 500 KF u. HM 14 - 800 KF^(*)

Infeed width HM 10:	877 mm
Infeed width HM 14:	1.215 mm
Ejection height:	up to 4.790 mm
Transport height:	2.900 mm
Transport width:	up to 2.700 mm
Working height:	1.150 mm
Length:	up to 5.160 mm
Support load:	up to 3.000 kg
Weight:	up to 9.500 kg

Chassis

- 40 km/h trailing axle chassis^(*)
- 40 km/h single axle chassis for crane installation^(**)
- Spring-loaded pneumatic brake
- Tyres:
 - » 385/55 R22.5^(*) » 400/55 22.5^(*)
 - » 560/45 R22.5^(*) » 500/45 22.5^(*)
- Height of towing port:
 - » 500 mm^(*) » 520 mm^(**)
 - » 620 mm^(**) » 900 mm^(**)
 - » 1.000 mm^(**)



HIGHLIGHTS



Easy resharpening from exchange blades



Top pressure roller Ø 800 mm and infeed height up to 800 mm



Assembling of a cone splitter possible



Heavy flymass for high performance



Front end roller with heavy hydraulic drive

all informations with chassis

HM 10 - 500 KTL

HM 14 - 800 KTL



Specifications

Infeed height:	800 mm
Ejection height:	up to 5.660 mm
Transport height:	3.650 mm
Transport width:	2.980 mm
Working height:	1.510 mm
Working width:	4.300 mm
Conveyor belt:	900 mm
Infeed table length:	1.500 mm
Standard-sieve:	45/60 mm
Pressure roller Ø:	800 mm
Chipping drum Ø:	495 mm
Flywheel Ø:	1.370 mm
Flywheel mass:	1.000 kg

HM 10 - 500 KTL

Infeed width:	877 mm
Length:	4.740 mm
Support load:	1.400 kg
Weight:	13.100 kg

HM 14 - 800 KTL

Infeed width:	1.215 mm
Length:	5.080 mm
Support load:	1.500 kg
Weight:	14.500 kg

Chassis

- Chassis-tandem 40/60 km/h with dual line air brakes
- Tyres:
 - » 385/55 R22.5
 - » 400/55 22.5
 - » 560/45 R22.5
- Height of towing port:
 - » 500 mm » 650 mm
 - » 720 mm » 1.000 mm



HIGHLIGHTS



Discharging chute telescopic



Special-sieve with stop-bars



3 cross augers



Rotor cover with extra sieve



Automatic trailer coupling with compressed air connection

HM 14 - 860 KTL



Specifications

Infeed height:	800 mm
Infeed width:	1.215 mm
Ejection height:	up to 5.710 mm
Transport height:	3.700 mm
Transport width:	2.980 mm
Working height:	1.620 mm
Working width:	4.300 mm
Conveyor belt:	900 mm
Infeed Table length:	1.500 mm
Standard-sieve:	45/50 mm
Pressure roller Ø:	800 mm
Chipping drum Ø:	690 mm
Flywheel Ø:	1.370 mm
Length:	5.800 mm
Flywheel mass:	470 kg
Support load:	1.980 kg
Weight:	16.360 kg

Chassis

- Chassis-tandem 40/60 km/h with dual line air brakes
- Tyres: 600/50 R22.5



HIGHLIGHTS



Reduced speed for less fines content



Multipiece sieve for easy exchange



Robust cleaning augers



Tandem-chassis with 80 km/h



Cyclone for dust reduction

HM 14 - 860 KL



Specifications

Infeed height:	800 mm
Infeed width:	1.215 mm
Transport height:	3.950 mm
Transport width:	2.550 mm
Working height:	1.800 mm
Working width:	3.800 mm
Ejection height:	up to 6.000 mm
Conveyor belt:	900 mm
Infeed table length:	1.500 mm
Standard-sieve:	45/50 mm
Pressure roller Ø:	800 mm
Chipping drum Ø:	690 mm
Flywheel Ø:	1.370 mm
Length:	7.800 mm
Weight:	26.000 kg

Mercedes Benz AROCS

Performance:	390 kW / 530 HP
Cubic capacity:	12,8 liter
Speed:	1.300 - 1.600 rpm
Drive:	6x6 all-wheel
Track width:	2.000 mm
Wheelbase:	4.200 mm

Chassis

- Tyre-type 1:
 - » Single tyres front axle 385/65 R22.5
 - » Twin tyres rear axle 315/80 R22.5
- Tyre-type 2:
 - » Single tyres front axle 445/65 R22.5
 - » Single tyres rear axle 600/50 R22.5



HIGHLIGHTS



Easy to move the lorry from the working seat



All functions can be controlled from the working seat



Direct drive from the engine of the complete performance incl. full warranty



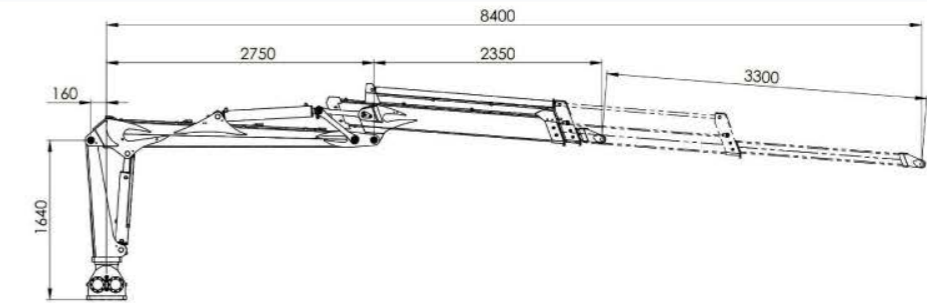
Engine cooling system with increased cooling capacity



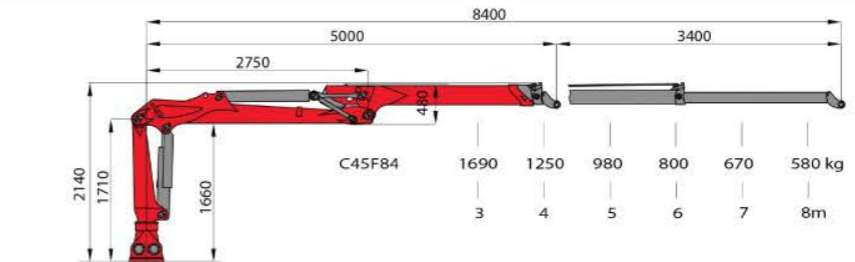
Move lorry, without stopping chipper by activated NMV.

Specifications	BMF	PALFINGER				
	840	C45F84	C60F86	M70F101	S100F101	S110F101
Max. lifting moment Brutto:	76 kNm	71 kNm	82 kNm	102 kNm	128 kNm	143 kNm
Max. torque:	8,4 m	8,4 m	8,6 m	10,1 m	10,1 m	10,1 m
Max. lifting power at 4 m:	1.390 kg	1.250 kg	1.510 kg	1.610 kg	2.140 kg	2.490 kg
Max. lifting power at 6 m:	850 kg	800 kg	980 kg	1.070 kg	1.420 kg	1.640 kg
Max. lifting power at 8 m:	500 kg	580 kg	720 kg	760 kg	1.030 kg	1.190 kg
Max. lifting power at 10 m:	-	-	-	540 kg	770 kg	900 kg
Max. swivel torque Brutto:	20,5 kNm	18 kNm	25 kNm	31 kNm	40 kNm	44 kNm
Swivel range:	370°	340°	425°	385°	385°	385°
Weight: (without hinge / rotator)	1.100 kg	1.100 kg	1.170 kg	1.730 kg	1.890 kg	1.920 kg
Working pressure:	200 bar	170 bar	200 bar	215 bar	215 bar	240 bar
Pump flow rate: (LS)	80 l/min	100 l/min	100 l/min	130 l/min	150 l/min	150 l/min
HM 8 - 400 KFL	•	•	-	-	-	-
HM 8 - 500 KFL	•	•	-	-	-	-
HM 10 - 500 KTL	-	-	•	•	•	-
HM 14 - 800 KTL	-	-	•	•	•	-
HM 14 - 860 KTL	-	-	•	•	•	-
HM 14 - 860 KL	-	-	-	-	-	•

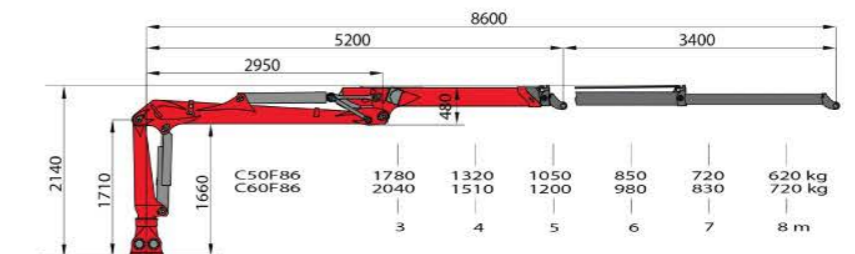
BMF 840



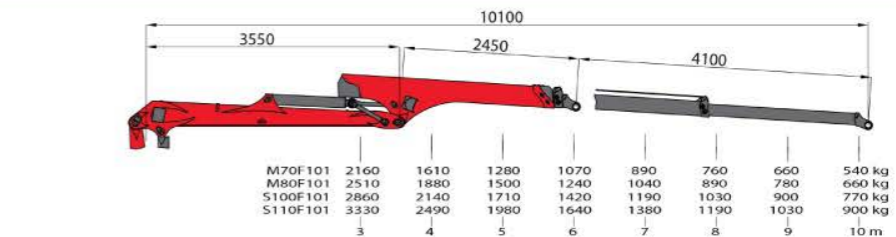
C45F84



C60F86



**M70F101
S100/110F101**



Technische Spezifikationen:	HG 1000	HG 1250	Super Grip II 260R
Manufacturer:	Heizomat	Heizomat	Hultdins
Max. load	2.000 kg	3.000 kg	3.000 kg
Working pressure:	200 bar	200 bar	250 bar
Max. opening width:	1.021 mm	1.321 mm	1.547 mm
Min. gripping diameter:	110 mm	86 mm	110 mm
Max. grasp surface:	0,15 m ²	0,20 m ²	0,26 m ²
Total weight::	110 kg	160 kg	230 kg

Hand-fed Electro-Woodchipper:

HM 6-300 EM
45 oder 55 kW

HM 8-400 EM
55 oder 75 kW



Cran-fed Electro-Woodchipper:

HM 8-400 KEM
110 kW

HM 8-500 KEM
132 kW

HM 10-500 KEM
132 kW



Pallet Chipper SPE-1300



The manually fed pallet chipper SPE 1300 has been constructed specifically for shredding pallets and wood waste into high quality wood chips. With the pallet chipper SPE 1300 natural pallets, which usually have to be disposed of, can be transformed into valuable fuel. The results of using this stationary, electrically driven machine are precious wood chips with a size from 30-50 mm. The machine can achieve an hourly throughput of up to 30 pallets.

The chipper has a reversible counter knife and 36 rotating cutting blades, which can be utilized twice. As there is no forced-feed mechanism, power consumption is reduced, as gravity uses the weight of the pallet as the infeed force. The drive of the cutting unit is performed by a belt drive via electric motor. By measuring the current consumption, the SPE 1300 automatically switches off when there is no longer any chipping material, meaning the chipper does not have to be manned once loaded. You can drop a pallet in and walk away.

Performance	45 kW	55 kW	75 kW	110 kW	132 kW
Voltage	400 V	400 V	400 V	400 V	400 V
Frequency	50 Hz	50 Hz	50 Hz	50 Hz	50 Hz
Phases	3Ph / N / PE	3Ph / N / PE	3Ph / N / PE	3Ph / N / PE	3Ph / N / PE
Current	200 A	250 A	310 A	460 A	560 A
Fusing	100 A	125 A	160 A	250 A	315 A
Motor speed	1.480 rpm	1.480 rpm	1.480 rpm	1.480 rpm	1.480 rpm
Control	Star-triangle-automatic start	Star-triangle-automatic start	Soft start and power switch	Soft start and power switch	Soft start and power switch

Technische Daten		Weight (kg)	1.880	Rotor diameter (mm)	300
Length (mm)	1.940	Number of blades (pc)	36	Rotor speed (U/min)	60
Width (mm)	1.200	Filling opening (mm)	1320 x 220	Driving power (kW)	18,5
Height (mm)	1.920	Perforated filter (mm)	30	Sound pressure 1m (db)	82



Since 1982 we have been producing sustainable heating systems with the main focus on renewable energy. Many of our inventions have become state of the art in our sector and make the automated burning of wood as easy as burning oil or gas. Our specialised components like the chain discharging system, the patented parallel motion discharging system and the new ET200 control unit continue to transform biomass heating technology leading the way to the future.

Heizomat heating systems:

- Power output range 30 kW - 990 kW
- Efficiency > 90%
- Combustion chamber wall thickness up to 8 mm
- Automatic de-ashing
- Ash-bin 40 l, 270 l, 400 l or 900 l
- Heat exchanger with 6,3 mm wall thickness
- Automatic ignition
- Insulation by 80 mm sandwich-panel



Heizotrans

- Ideal bunker filling system for every situation



Heizogreif forest pliers

- For crane, digger und front-loader
- Opening 1.500 mm
- Width up to 1.800 mm
- Design 3/2, 4/3 or 5/4 with massive steel tooth
- With mounting bracket for Euro 3 or other systems



Heizoschaufel - Heizoshovel

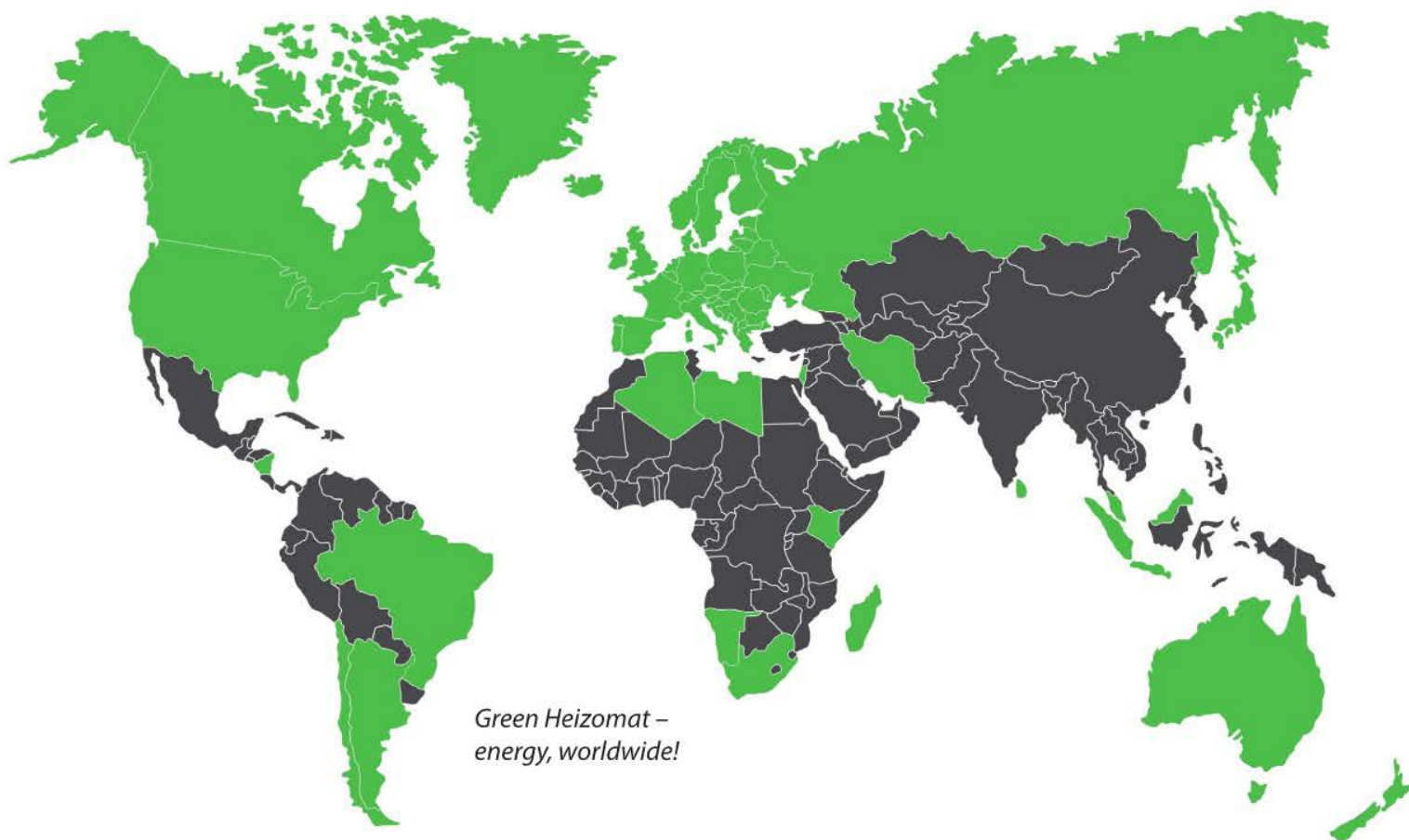
- 1 m³, 2 m³ or 3 m³
- With mounting bracket for Euro 3 or other systems

The Heizotruck based on a Mercedes Arocs 2051 4x4 was specially developed by us for demanding activities in agricultural and forestry areas. Because of its extensive standard equipment, the Heizotruck can be used absolutely flexibly.

STANDARD EQUIPMENT

- | | | | |
|------------------------------|--|------------------------------|----------------------------|
| • Rear PTO | • Load sensing hydraulics | • Front and rear view camera | • Compressed air hose reel |
| • Panorama window | • Front plate with hydraulic | • All wheel drive (4x4) | • LED light system |
| • Hitch K80 with K50 | • Fifth wheel plate | • Rotating light | • Flow rate regulator |
| • ISOBUS interface | • Navigation system | • Parking heater | • Combi-tank |
| • Trailer hitch bolt Ø 38 mm | • Tyres 14.00 R20 + 1 set after choice | | |
| • Flashing light | • 12 V voltage converter | | |

**Since 1982, approximately 500 employees and more than
35,000 customers worldwide contribute to a heat and energy revolution!
Be a part of it!**



*Green Heizomat –
energy, worldwide!*

*Technical changes, which serve the continuous
further development, are reserved.*

Dimensions and weights are all approximate!

Images may include optional equipment.

Add-on devices not included.

The logo for Heizomat, featuring a stylized flame icon in red and orange above the word 'Heizomat' in a green, cursive font. A registered trademark symbol (®) is located to the right of the flame icon.

Our partner:

Gerätebau + Energiesysteme GmbH

Maicha 21 • 91710 Gunzenhausen

Tel.: +49 (0) 9836 97 97 - 0

Fax: +49 (0) 9836 97 97 - 97

info@heizomat.de • www.heizomat.de