



# HAY CRANES





# THE ADVANTAGE OF THE PRESSING CYLINDER

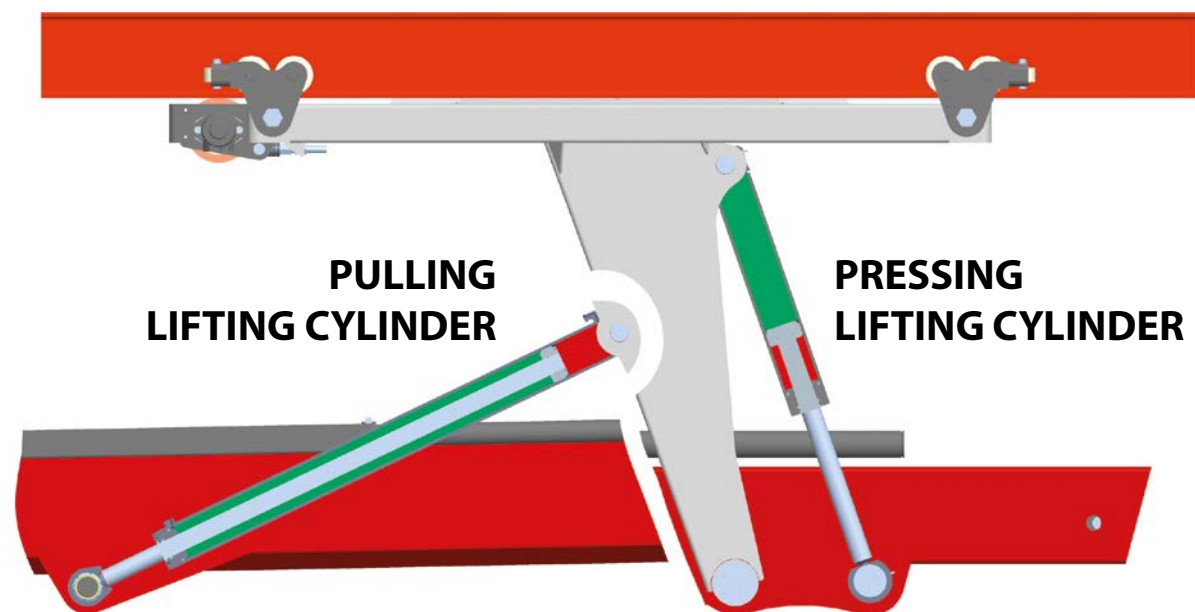
## Using the laws of physics correctly

A cylinder has most power when the piston rod is moving out. When the rod is moving in, the cylinder has less power, but also needs less oil. Here at STEPA we have made use of this knowledge and arranged the lifting cylinder behind the crane post ('**PRESSING LIFTING CYLINDER**').

The result is that a STEPA hay crane needs less oil for lifting and lowering, higher speeds are possible, the oil heats up less and the crane's movements are better. For what is now 25 years and thus for over 15,000 STEPA customers our courage to make changes has proved its worth thousands of times over.

The pressing lifting cylinder is also found in many PALFINGER products, ranging from 'F' for forestry cranes, via 'L' for lorry loading cranes all the way to 'R' for recycling cranes.

## Expertise that you can see!



## Proven STEPA standards

- the ideal crane geometry
- correctly arranged cylinder
- lower oil consumption
- higher speeds
- proven thousands of times over
- performs similarly in heat and cold

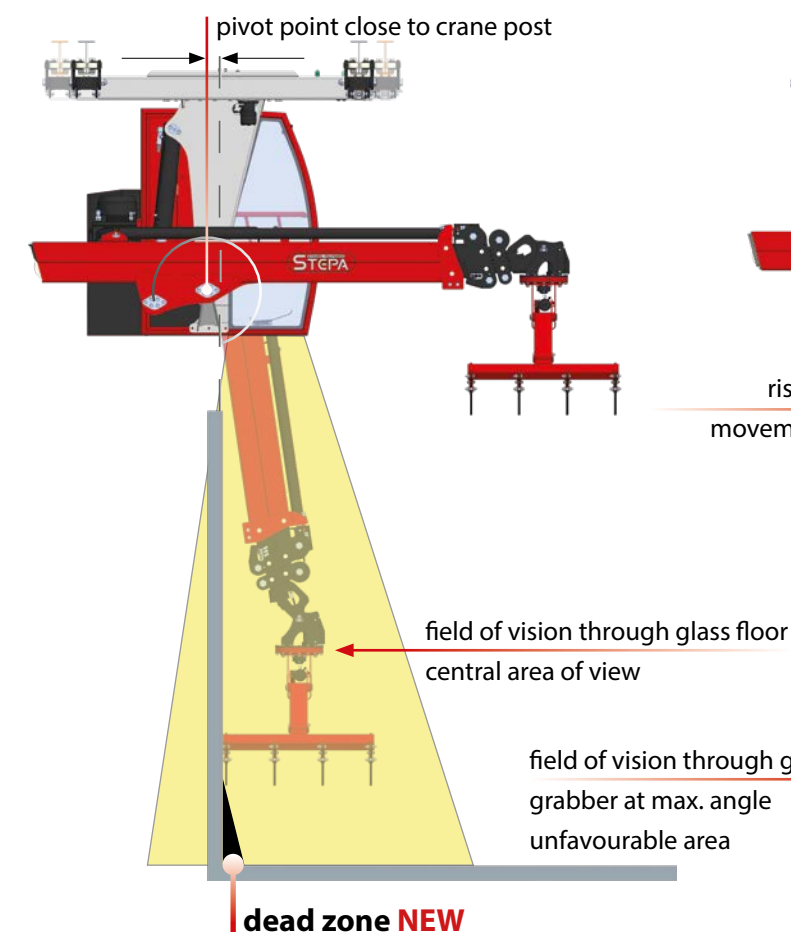
# STEPA KNOW-HOW OPTIMISED CRANE GEOMETRY

## A direct comparison shows the new strengths

The new '30 Years' crane generation fares well by any comparison. The improved crane geometry makes it possible to reach what was previously unreachable. With no transverse or tracked sideways movement at all, even hard to reach corners are now no longer a problem. An inexpensive, standard capability from which every STEPA customer now benefits.

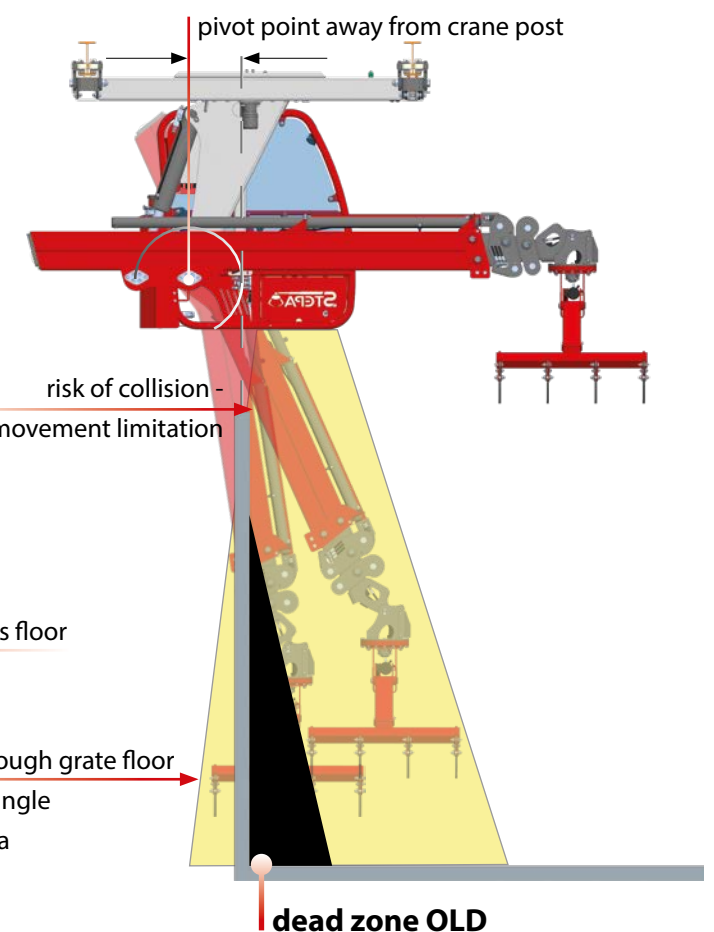
## NEW '30 Years' edition

### H 5084B



## 2015 model

### H 5090B



## '30 Years' edition improvements

- pivot point close to the crane post
- more possibilities as standard
- better visibility, everything in view
- now practically no blind spot
- overcoming obstacles made easy
- now only smaller protrusions necessary when using rails that lead into open space or cross-bridges
- as a result also less of a load on the roof structure



# CRANE CABIN

## '30 YEARS' EDITION

noise insulating mat

two powerful LED headlights

high-quality control box with or without automatic start-up  
operating hours counter and EMERGENCY OFF button

optimised cabin visibility above, below and to the rear

high-quality side window for top visibility

handy STEPA compartment for paperwork

wide entrance into the cabin

more room between the levers

additional side window for a better diagonal view below  
lightweight and robust tubular cabin structure

rearranged pedals with less play

abseil fixture for emergencies

optionally available with radio and two loudspeakers

optionally available with rear glass window

**NEW**

super silent pump  
from H50 as standard

foldable engine hood for greater noise protection

two possible seat sizes

optionally available with heated seat

contact seat switch for greater safety

fitted with one or two  
well-protected quiet electric motors

large hydraulic tank with oil level indicator  
optionally available with hydraulic tank heating

new modern colour scheme  
red-and-black for added elegance

optimised, smaller turning circle

### '30 Years' edition improvements

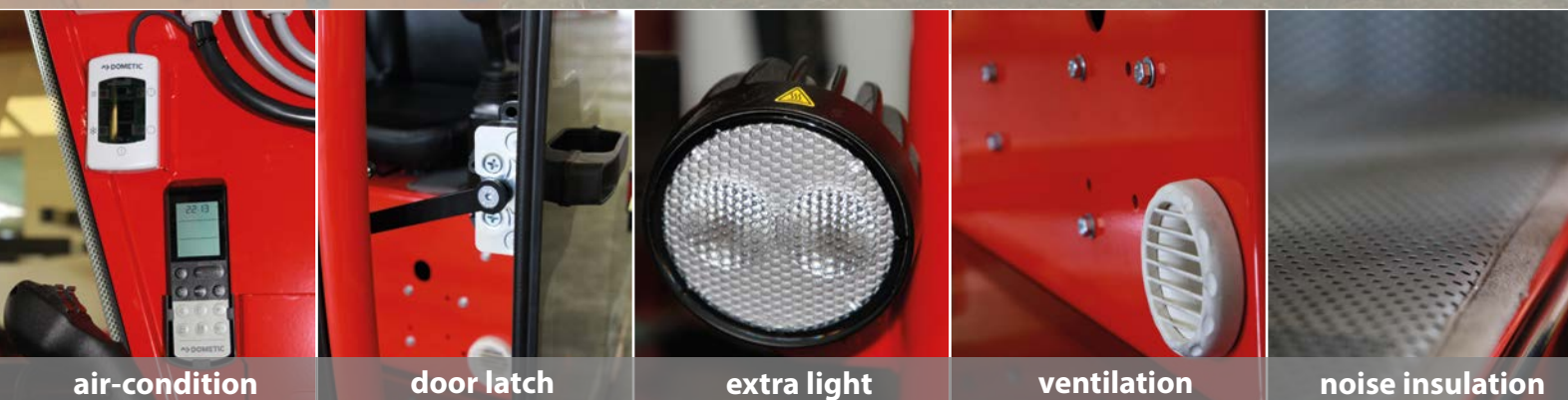
- lightweight and robust tubular cabin structure
- optimised cabin visibility
- safety glass side pane in footwell
- rearranged pedals
- wide entrance into the cabin
- more room between the levers
- foldable engine hood / noise insulation
- one or two electric motors
- smaller turning circle
- STEPA compartment
- optionally with heated seat
- optionally with rear glass window
- optionally with hydraulic tank heating
- new colour scheme in red-and-black
- from H50 with super silent pump as standard

### Proven STEPA standards

- spacious cabin
- two LED headlights
- high-quality side window
- metal sheet floor as standard
- toughened glass floor optionally
- noise insulating mat
- large hydraulic tank
- abseil fixture
- oil level indicator
- available with two different seats
- high-quality control box
- EMERGENCY OFF button
- contact seat switch according to norm
- optionally available with radio



# AIR-CON CABIN TOP-LEVEL COMFORT



## '30 Years' edition AIR-CON Cab

- fully enclosed cabin
- high-performance air-conditioning
- wide-opening doors with gas cylinders
- proprietary control software with CAN bus control system
- error code display just in case
- with joystick and/or wireless and combined control system possible
- optionally with large seat
- optionally with heated seat
- optionally with hydraulic tank heating
- optionally with radio (Bluetooth, DAB, USB) and two loudspeakers
- 3 LED headlights as standard
- with rear window and visibility to the rear
- various speed levels

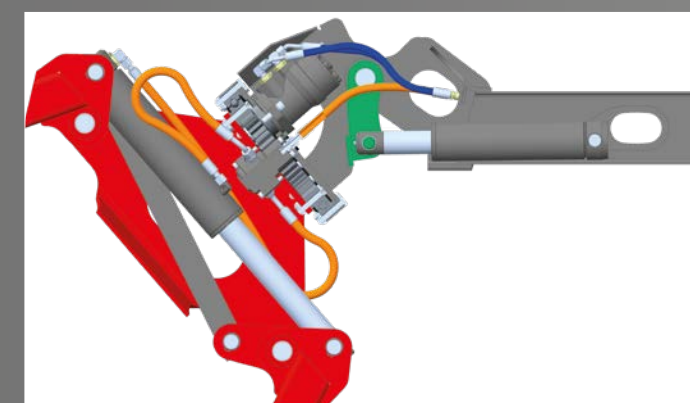
# WE SHOW PROFILE WITH 4 CORNERS AND EDGES



- large boom dimensions
- high-strength steel cables with large deflection pulleys
- runs very quietly even at maximum speed
- high pull-in strength levels thanks to strong cylinder
- compact design with long reach
- low-maintenance design
- internal hose guide
- synchronisation control on all 3-part telescopic systems
- end stop dampers on all 4-part telescopic systems
- thanks to the 6 hoses in the boom system no switch valve or solenoid valve is required
- every function is initiated directly proportionally

## Rotation lift-up system

- the lowest and most compact design
- intelligent hose guide
- protected from A to Z
- greater stability for added safety
- increased lift-up strength
- includes service cover for best possible access

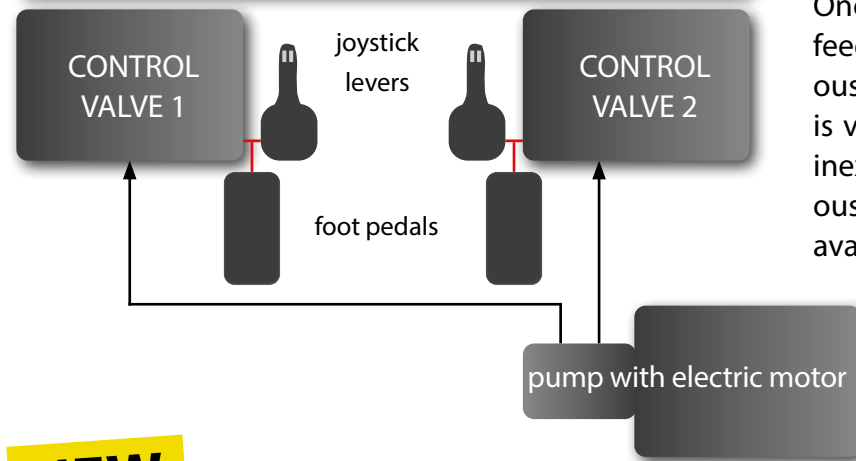




# OPTIONAL EXTRA POWER SENSITIVELY CONTROLLED

Move quickly and intelligently

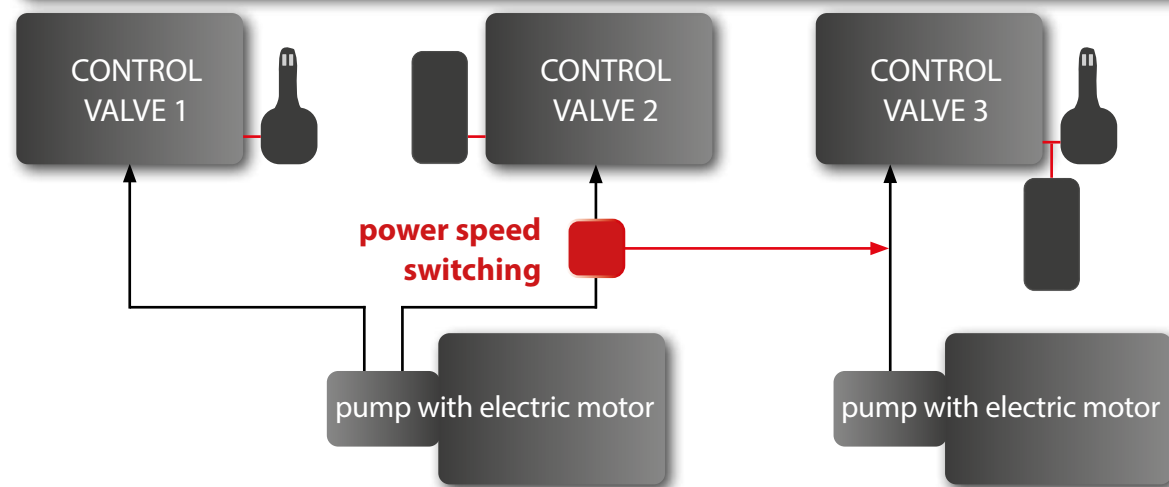
## 2-circuit system: STANDARD ease of operation



One power unit complete with pump feeds two control valves. Simultaneously operating multiple functions is very much possible. A proven and inexpensive system that simultaneously makes maximum use of the available power.

**NEW**

## 3-circuit system: MORE POWER AT THE RIGHT TIME IN THE RIGHT PLACE



Upon request, STEPA turns **TWO** into **THREE** and offers an even faster, but still sensitive and precise crane control.

Using their pumps, two power units feed three control valves. In this way, important functions can be fed using a dedicated circuit and operated at maximum speed. At the same time, all other functions can be controlled in even better combination with each other. A further highlight is provided by optionally available 'power speed switching': Where necessary, it enables the second control circuit to be connected to the third control circuit.

The advantage of this: more power at the right time in the right place.

# DIVERSE OFFERING FOR OPTIMAL WORKING



working with radio remote control  
and swivel load hook



# TRIPLE TELESCOPIC BOOM

## SIMPLY THREE TIMES AS GOOD



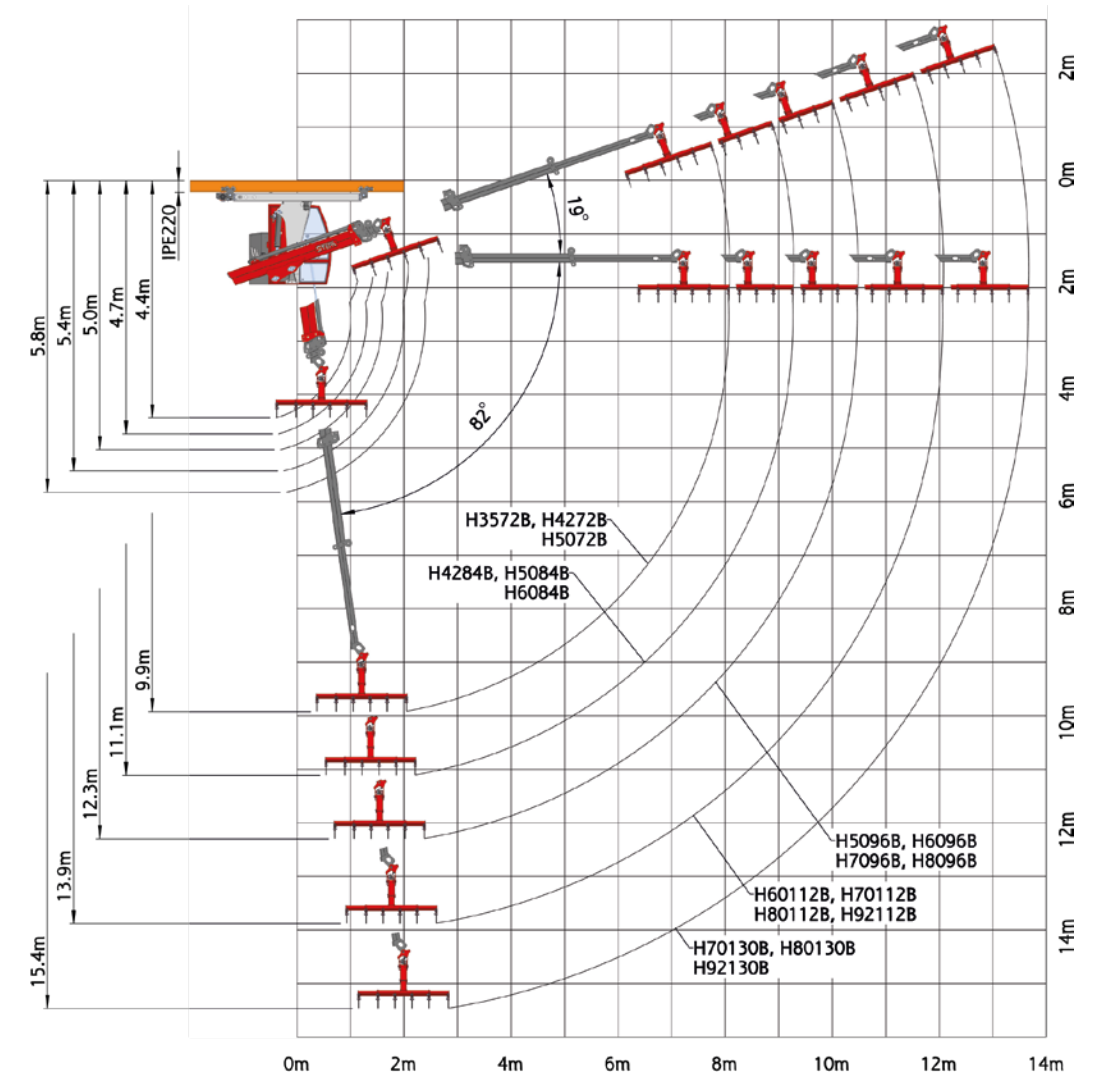
H 4272 B

### 1 cylinder - 3 extensions - 5 advantages

STEPA's best-selling boom system impresses with its special features:

- very high extension and retraction speeds
- short design with small turning circle
- intelligent hose guide, no hose drum required
- low oil consumption thanks to deflection pulleys and cable discharge
- with synchronisation control

optionally with extra head-light in the telescopic boom



type	gross lifting torque	net lifting torque	max. load capacity at the hook at maximum reach	power unit performance
H3572B	4.0 mto	3.4 mto	360 kg / 7.2 m	5.5 kW
H4272B	4.9 mto	4.3 mto	480 kg / 7.2 m	5.5 kW
H4284B	4.9 mto	4.2 mto	370 kg / 8.4 m	5.5 kW
H5072B	5.6 mto	5.0 mto	570 kg / 7.2 m	7.5 kW
H5084B	5.6 mto	4.9 mto	450 kg / 8.4 m	7.5 kW
H5096B	5.6 mto	4.8 mto	360 kg / 9.6 m	7.5 kW
H6084B	6.7 mto	6.0 mto	580 kg / 8.4 m	7.5 kW
H6096B	6.7 mto	5.9 mto	470 kg / 9.6 m	7.5 kW
H60112B	6.7 mto	5.7 mto	350 kg / 11.2 m	7.5 kW
H7096B	7.6 mto	6.8 mto	550 kg / 9.6 m	5.5 + 7.5 kW
H70112B	7.6 mto	6.6 mto	420 kg / 11.2 m	5.5 + 7.5 kW
H70130B	7.6 mto	6.4mto	320 kg / 12.8 m	5.5 + 7.5 kW
H8096B	8.7 mto	7.6 mto	650 kg / 9.6 m	5.5 + 7.5 kW
H80112B	8.7 mto	7.4 mto	510 kg / 11.2 m	5.5 + 7.5 kW
H80130B	8.7 mto	7.2 mto	400 kg / 12.8 m	5.5 + 7.5 kW
H92112B	9.9 mto	8.6 mto	610 kg / 11.2 m	5.5 + 7.5 kW
H92130B	9.9 mto	8.4 mto	490 kg / 12.8 m	5.5 + 7.5 kW

max. load capacity 1,000 kg



# QUADRUPLE TELESCOPIC BOOM

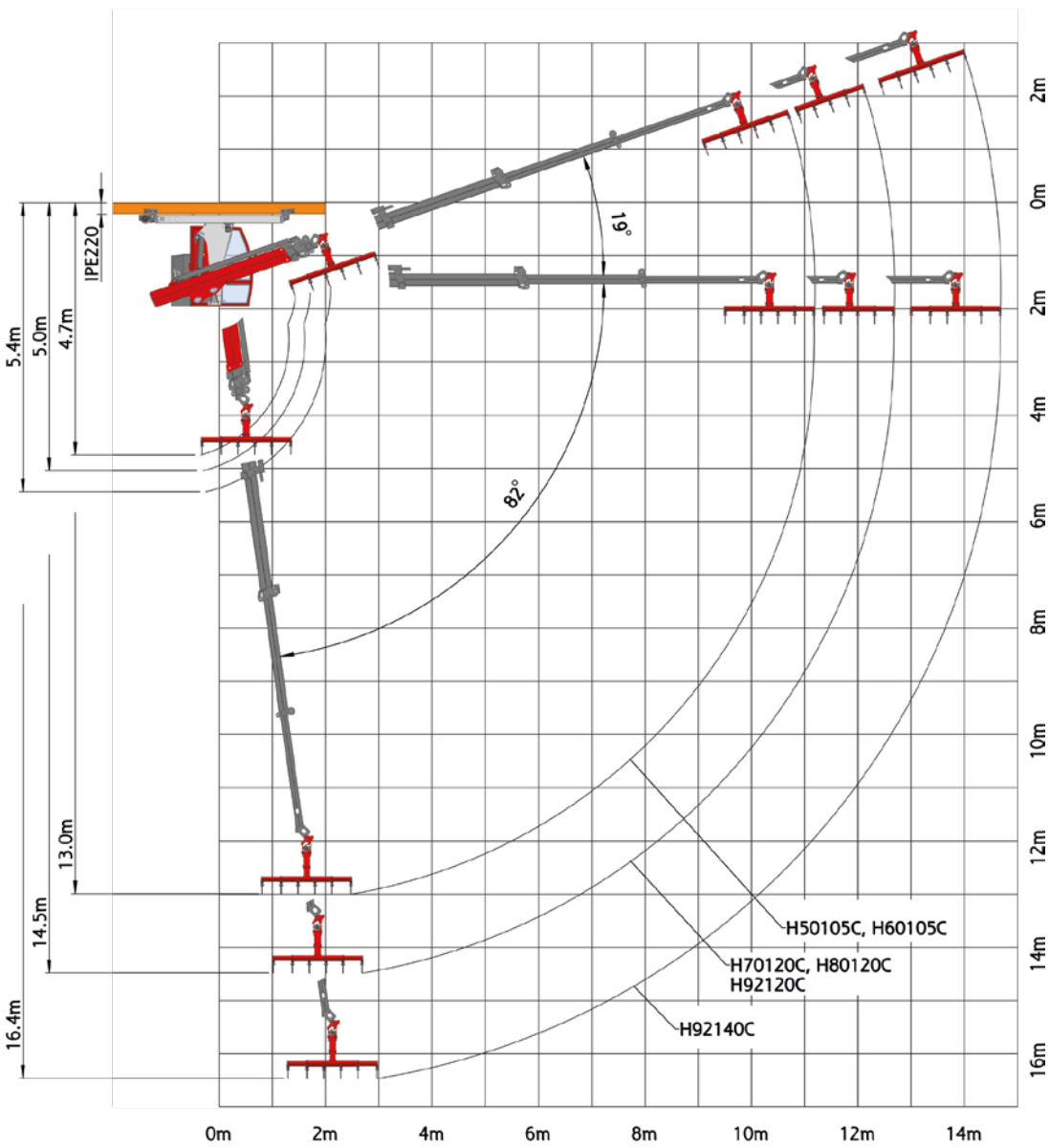
## SHORTER AND LONGER



### When things get tight, the answer is a 4-part telescopic boom

STEPA's compact and nimble solution for narrow stable buildings

- shorter than any other crane
- enormous reach of up to 16m possible
- proven internal hose guide
- two strong telescopic cylinders
- even bigger boom dimensions
- automatic end stop damping



type	gross lifting torque	net lifting torque	max. load capacity at the hook at maximum reach	power unit performance
H50105C	5.6 mto	4.8 mto	280 kg / 10.3 m	7.5 kW
H60105C	6.8 mto	5.8 mto	390 kg / 10.3 m	7.5 kW
H70120C	7.6 mto	6.5 mto	350 kg / 11.8 m	5.5 + 7.5 kW
H80120C	8.7 mto	7.5 mto	440 kg / 11.8 m	5.5 + 7.5 kW
H92120C	9.8 mto	8.5 mto	530 kg / 11.8 m	5.5 + 7.5 kW
H92140C	9.8 mto	8.3 mto	390 kg / 13.8 m	5.5 + 7.5 kW

max. load capacity 1,000 kg



# TELESCOPIC KNUCKLE BOOM CRANE WITH NEW EXTENSION SYSTEM



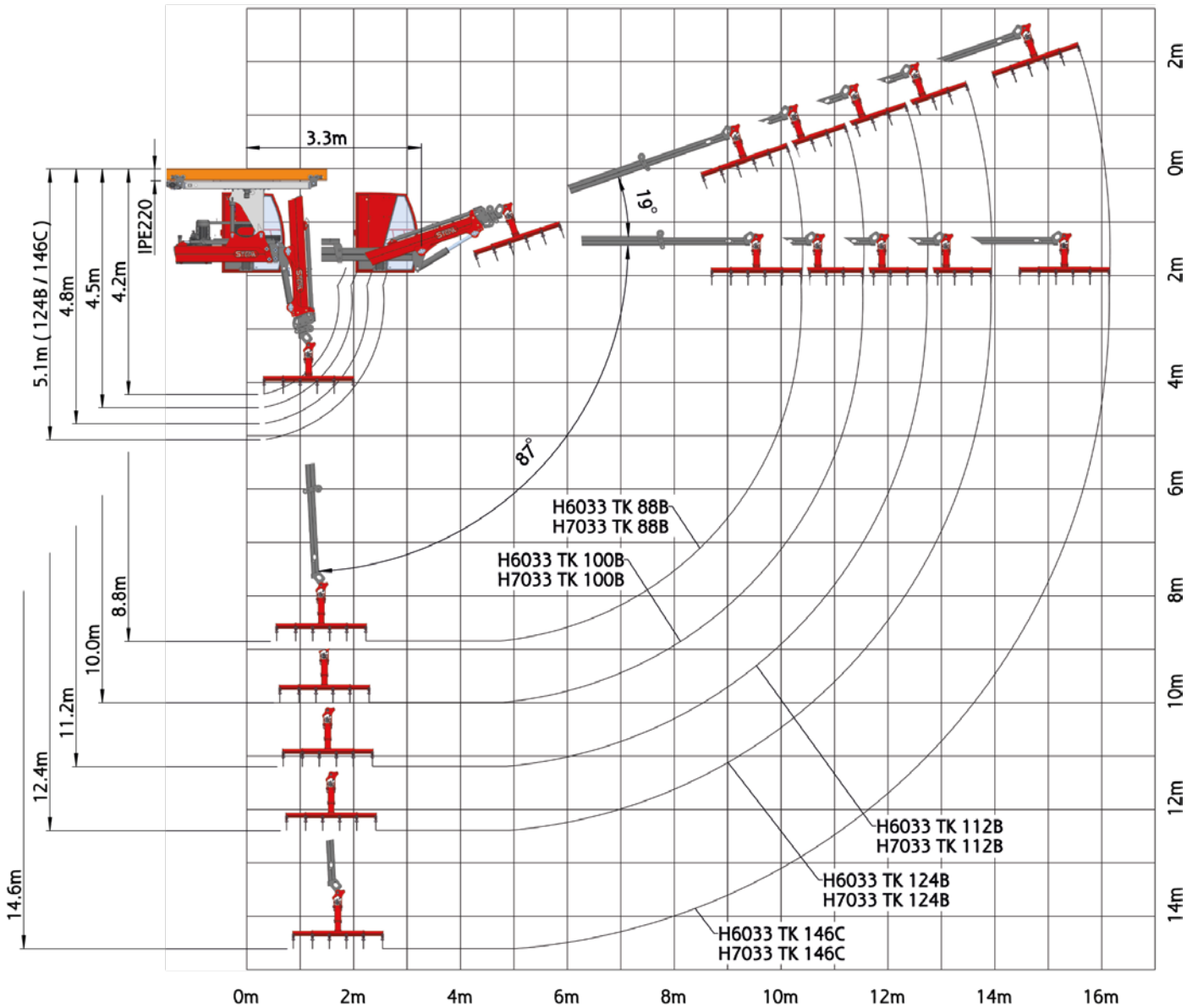
**NEW**  
super silent pump  
as standard

**Greater lifting power  
when cabin is extended**

Theseparationofcabinandtank,completewithelectric  
powerunitsandhydraulicpumps,nowmakesthiscrane  
model even more powerful when the cabin is exten-  
ded, while having no impact on the load on the roof  
structure.

## '30 Years' Edition improvements

- shorter retracted length thanks to double telescopic boom system
- up to 3.3m extension
- new and bigger boom profiles
- available in 2 lift categories and up to 5 different knuckle boom systems
- new hose guide with cab extension system
- now also available with AIR-CON cabin



type	max. load capacity at the hook at maximum reach	power unit performance	cabin telescopic boom	knuckle boom telescopic boom
H6033 TK 88B	460 kg / 9.5 m	7.5 kW	double	triple
H6033 TK 100B	370 kg / 10.7 m	7.5 kW	double	triple
H6033 TK 112B	300 kg / 11.9 m	7.5 kW	double	triple
H6033 TK 124B	230 kg / 13.1 m	7.5 kW	double	triple
H6033 TK 146C	0 kg / 15.3 m	7.5 kW	double	quadruple
H7033 TK 88B	550 kg / 9.5 m	7.5 kW	double	triple
H7033 TK 100B	450 kg / 10.7 m	7.5 kW	double	triple
H7033 TK 112B	370 kg / 11.9 m	7.5 kW	double	triple
H7033 TK 124B	300 kg / 13.1 m	7.5 kW	double	triple
H7033 TK 146C	0 kg / 15.3 m	7.5 kW	double	quadruple

max. load capacity 1,000kg



# TELESCOPIC KNUCKLE BOOM CRANE

## BETTER OVERVIEW



NEW

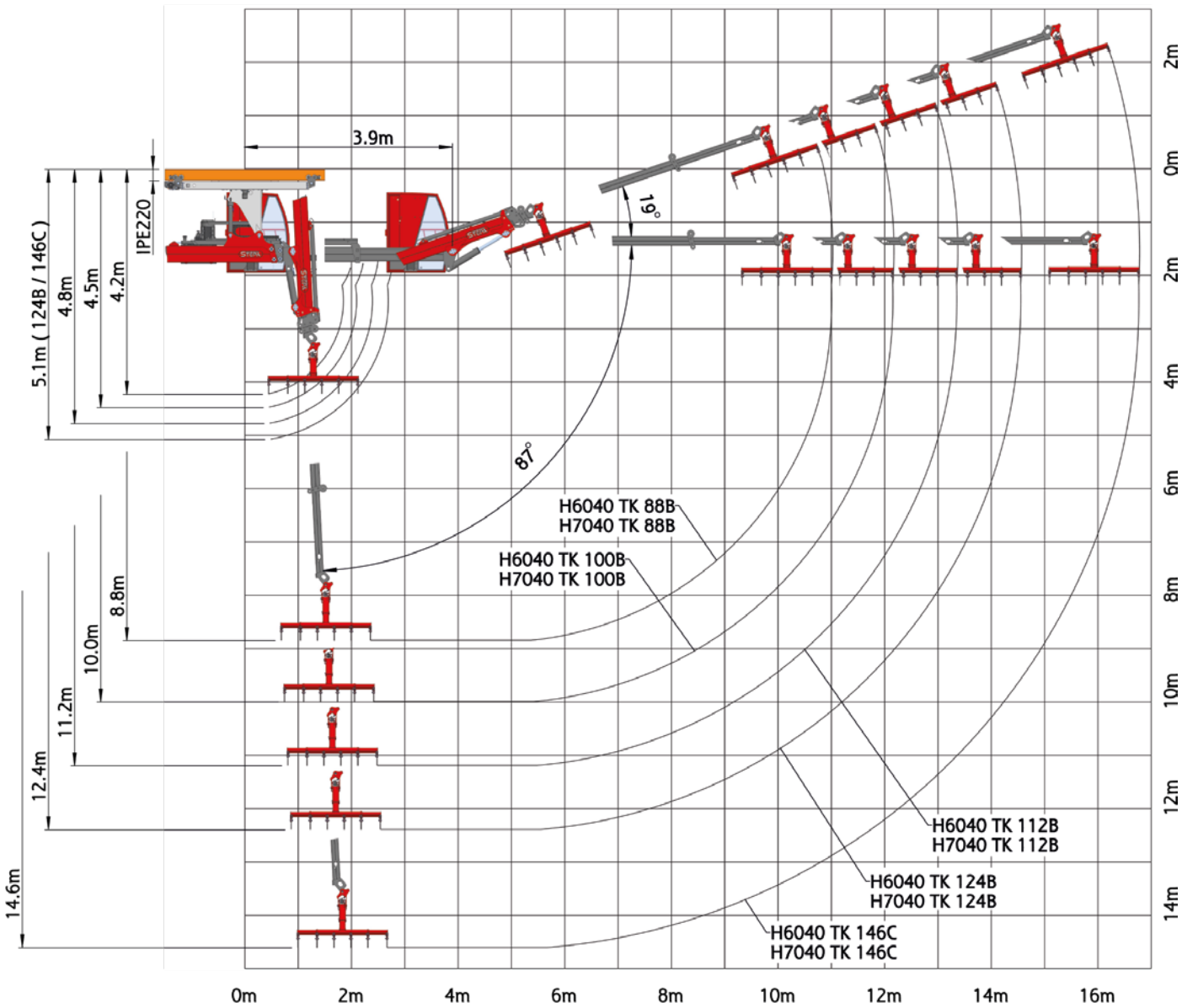
super silent pump  
as standard

No obstacle is too much for it

With even greater reach of nearly 4m and  
with more lifting capacity, the large variant  
can reach even the most remote areas in the  
building.

### '30 Years' Edition improvements

- shorter retracted length thanks to double telescopic boom system
- up to 4.0m extension
- new and bigger boom profiles
- available in 2 lift categories and up to 5 different knuckle boom systems
- new hose guide with cab extension system
- now also available with AIR-CON cabin



type	max. load capacity at the hook at maximum reach	power unit performance	cabin telescopic boom	knuckle boom telescopic boom
H6040 TK 88B	350 kg / 10.2 m	7.5 kW	double	triple
H6040 TK 100B	270 kg / 11.3 m	7.5 kW	double	triple
H6040 TK 112B	220 kg / 12.5 m	7.5 kW	double	triple
H6040 TK 124B	160 kg / 13.7 m	7.5 kW	double	triple
H6040 TK 146C	0 kg / 15.9 m	7.5 kW	double	quadruple
H7040 TK 88B	440 kg / 10.2 m	7.5 kW	double	triple
H7040 TK 100B	350 kg / 11.3 m	7.5 kW	double	triple
H7040 TK 112B	290 kg / 12.5 m	7.5 kW	double	triple
H7040 TK 124B	230 kg / 13.7 m	7.5 kW	double	triple
H7040 TK 146C	0 kg / 15.9 m	7.5 kW	double	quadruple

max. load capacity 1,000kg



# ONE CHASSIS FOR YOUR ROOF STRUCTURE



transverse chain drive



curve travelling mechanism



cross-bridge

# ACCESSORIES CONTROL MODES



extra lever



change-over button



3-circuit joystick control  
hydraulic or electric



3 coordinate lever



3-circuit  
wireless remote control



power speed button



metal sheet floor  
as standard



oil cooler



optionally with two  
electric power units



# ACCESSORIES

## SAFETY AND EASE OF USE



grab winch



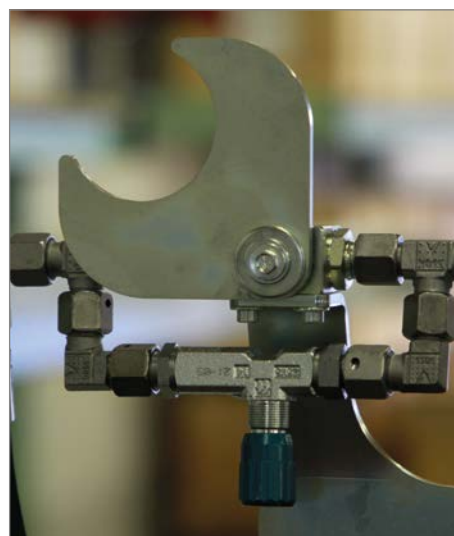
radio (Bluetooth, DAB, USB)  
with two loudspeakers



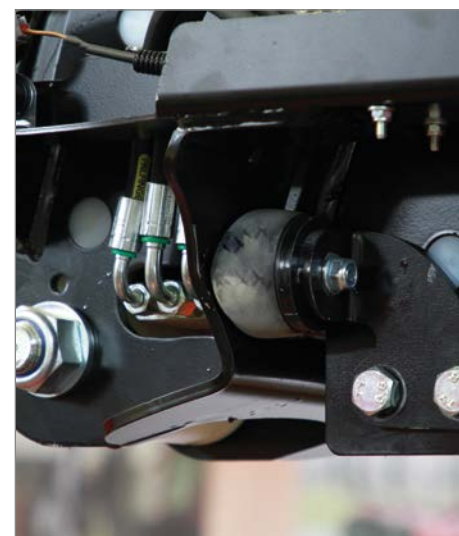
handy compartment



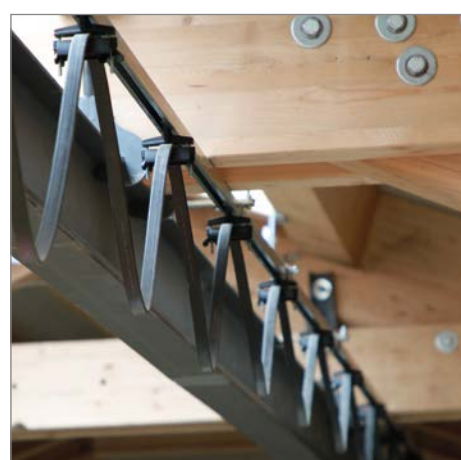
seat XL



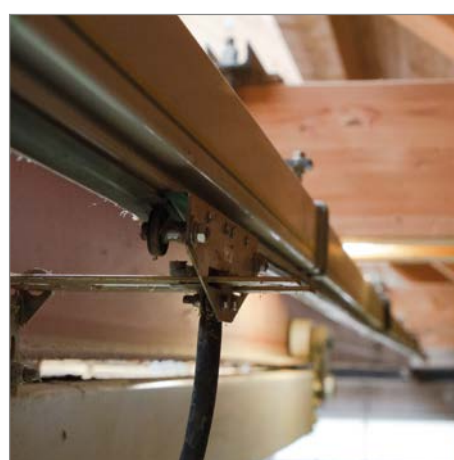
rail limit switch-off



end stop buffer with 4-part  
telescopic boom



low-profile cable



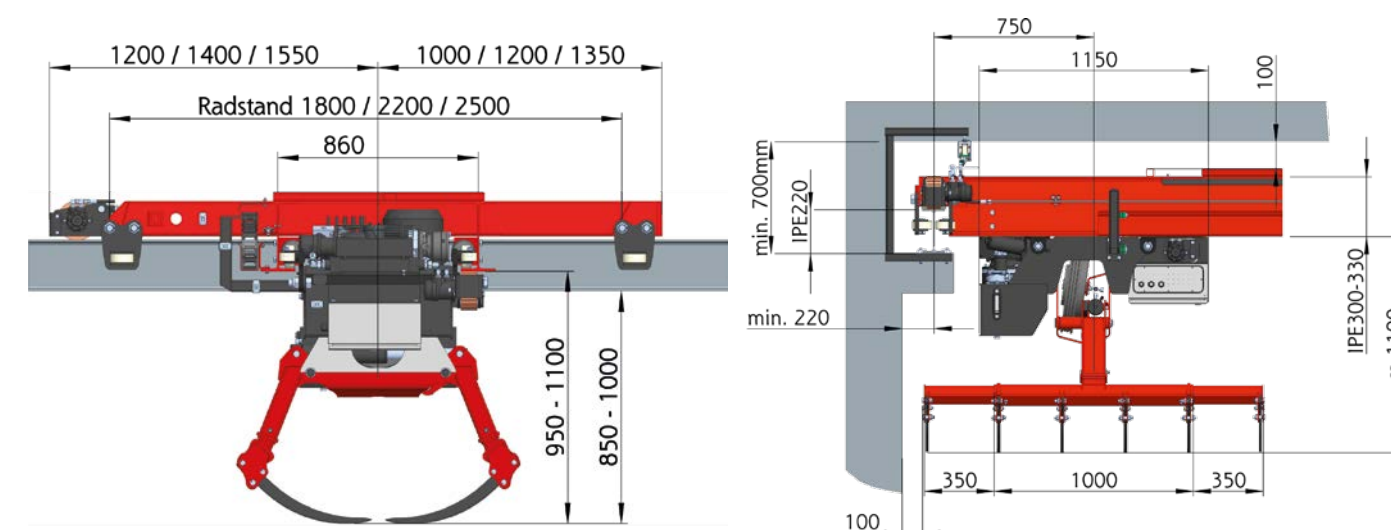
conductor line duct



numerous different  
rail brackets

# OVERHEAD BRIDGE CRANE

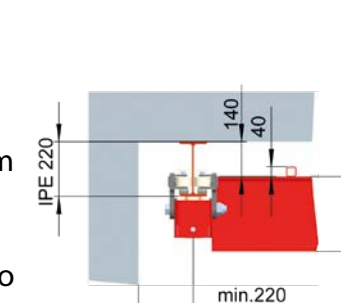
## SPACE-SAVINGLY COMPACT



**Reaches every corner with seamless wireless remote control.**

The tried and tested overhead crane can be both run on or suspended from existing or new tracks.

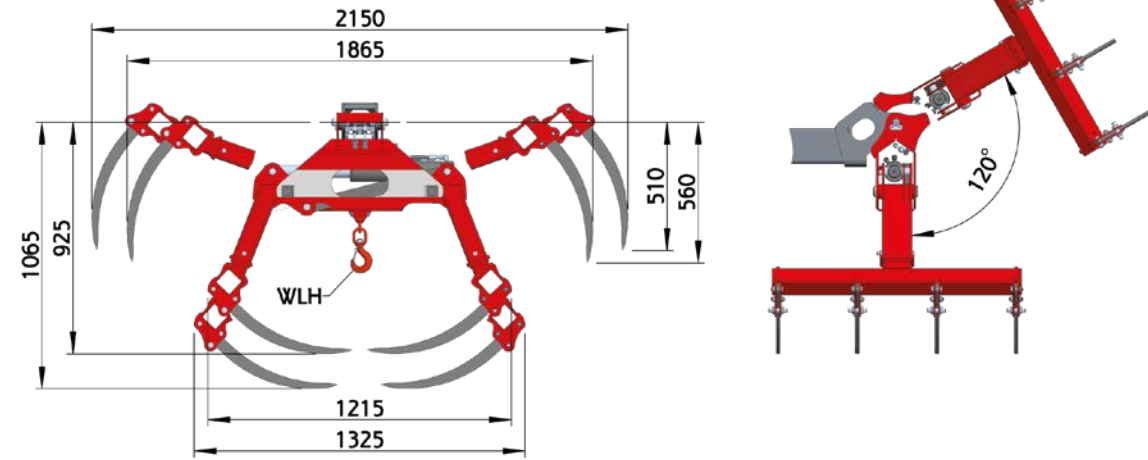
The large grab fork makes it possible to move even large quantities of hay to the most remote spot in the stable building in next to no time.



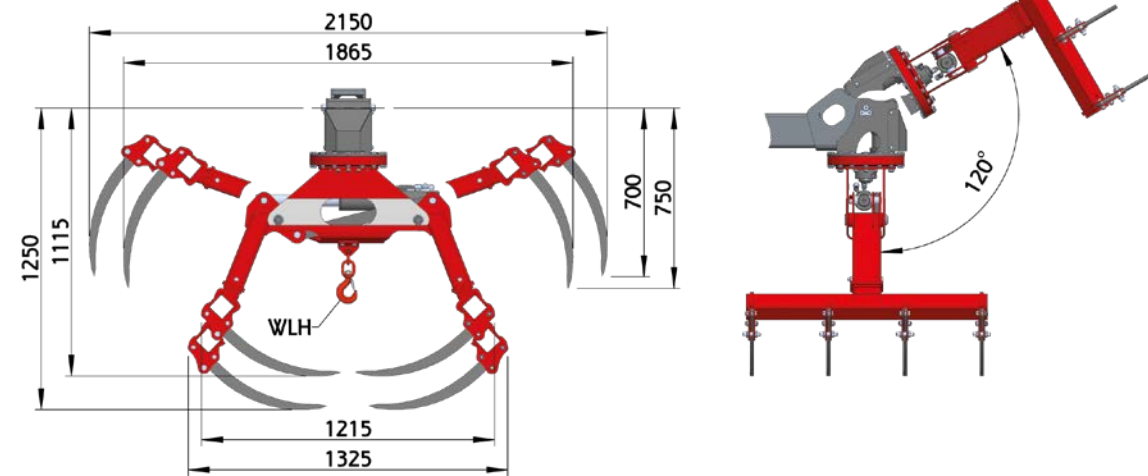


# GRAB ONE NOW! STRONGER THAN ANY OTHER

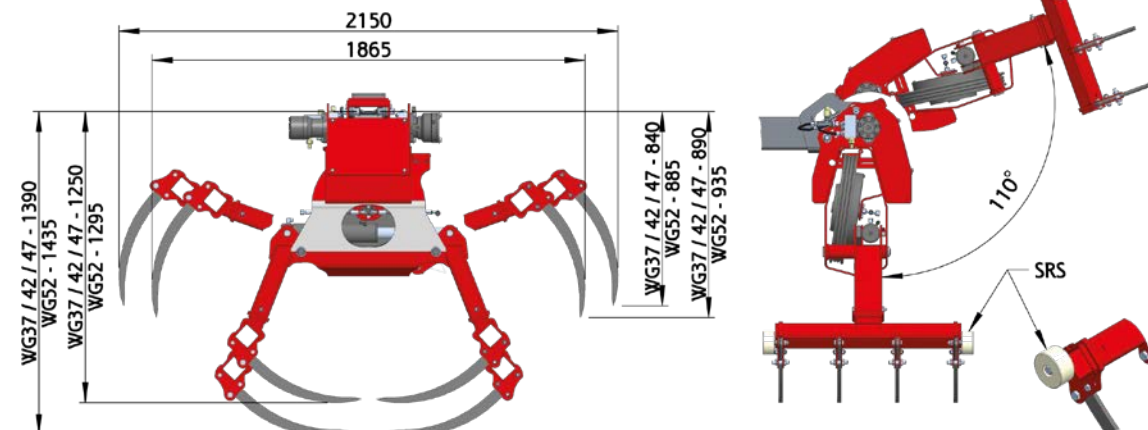
Grab HG or HGS with lift-up system



Grab RG or RGS with rotation lift-up system



Grab WGS with winch and lift-up system



H 6096 B



# THE PERFECT PARTNER FOR AGRICULTURE



STEPA Farmkran GmbH  
Christophorusstraße 28  
5061 Elsbethen / AUSTRIA  
T +43 662 / 636 404-0  
F + 43 662 / 636 404-3  
E office@stepakran.com

Follow us



Your STEPA partner:

ST34 / 0824\_web update\_EN

This brochure is intended for international use. The availability of some models and the standard specifications and optional extras may vary from country to country. STEPA reserves the right to make changes to designs and technical specifications at any time and with no prior notice without in any way being committed to carry these over to units already sold. All information, descriptions and imagery was up to date at time of going to print, but can also be changed without prior notice. Illustrations may show specific country versions, optional features and incomplete standard versions. All measurements stated are non-binding. Representations of working load are normed illustrations and are not the optimum boom position in which the maximum lifting power can be achieved.